

SAW 245 MHz Filter

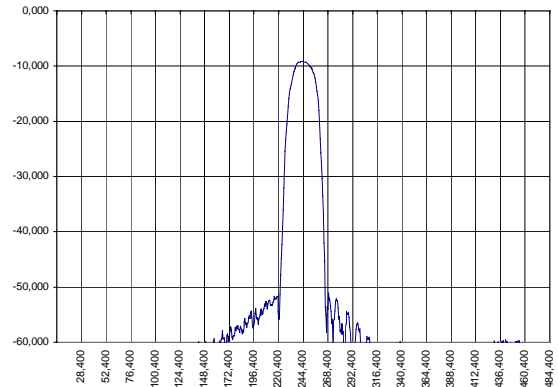
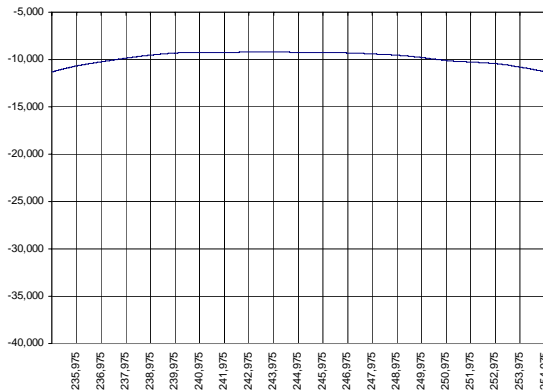
Bandwidth 17.5 MHz

AEC Part Number A120-245M1

Complies with Directive 2002/95/EC (RoHS)

PRELIMINARY DATA

Typical performance



Specifications

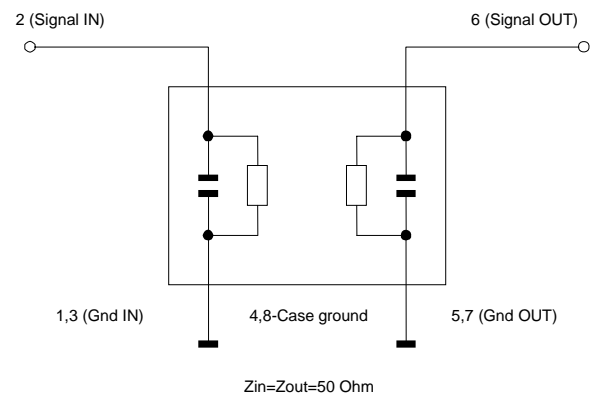
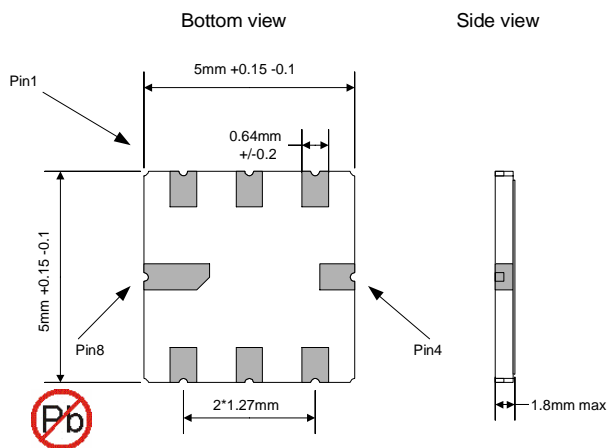
Parameter	Unit	Min	Typ	Max
Central frequency	MHz	244.5	245	245.5
Inserted loss (matched)	dB	8	9	10
Bandwidth @-1.5dB	MHz	17	17.5	18
Bandwidth @-40dB	MHz	42	43	44
Amplitude ripple	dB	0.5	1	1.5
Ultimate rejection	dB	-	50	-
Substrate		-	128 LNO	-
Temperature range	°C	-55		85

Notes:

1. The design, manufacturing process, and specifications of this filter are subject to change.
2. Specification valid for measurements in AEC test fixture

Case

Matching



Matching: series inductor 71nH and parallel capacitor 4-20pF at input port, series inductor 39nH and parallel capacitor 4-20pF at output port.