

Wide bandwidth SAW 1000 MHz Filter

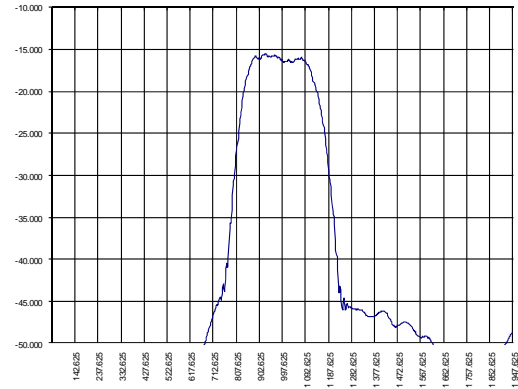
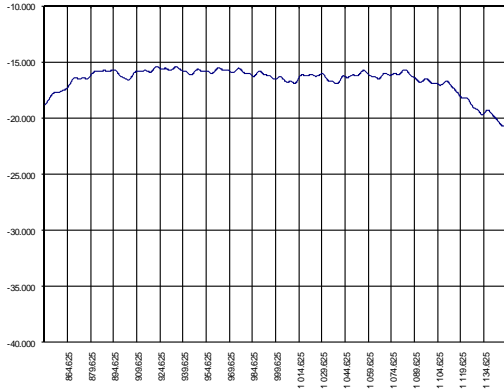
Bandwidth 260 MHz

Part Number A192-1000M1

Complies with Directive 2002/95/EC (RoHS)

PRELIMINARY DATA

Typical performance



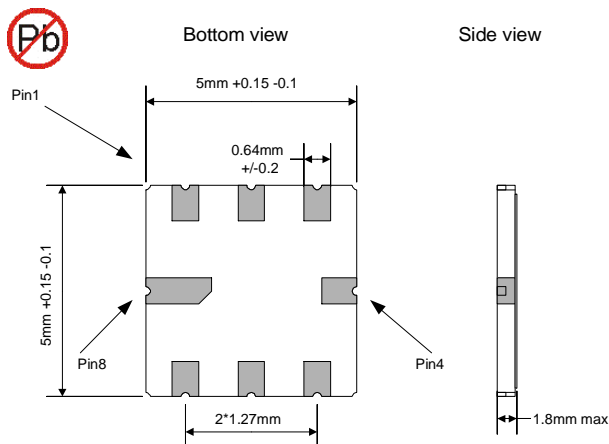
Specifications

Parameter	Unit	Min	Typ	Max
Central frequency	MHz	995	1000	1005
Inserted loss (unmatched)	dB	15	15.5	16
Bandwidth @-2dB	MHz	250	260	270
Bandwidth @-30dB	MHz	490	495	510
Amplitude ripple	dB	-	1.5	-
Ultimate rejection	dB	-	30.0	35.0
Substrate		-	64 LNO	-
Temperature range	°C	-55		85

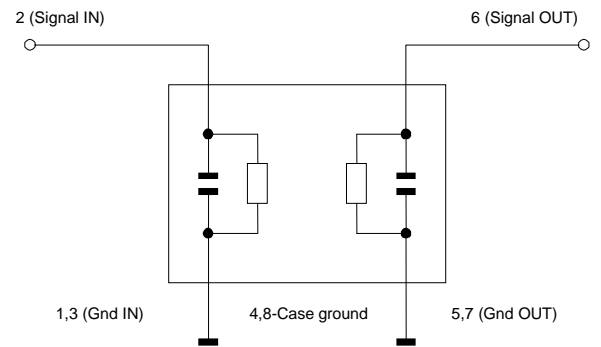
Notes:

1. The design, manufacturing process, and specifications of this filter are subject to change.
2. Specification valid for measurements in AEC Design test fixture

Case



Matching



$Z_{in}=Z_{out}=50 \text{ Ohm}$
 Matching: series capacitor 2.7-10pF and parallel inductor 3.9nH at input port, series capacitor 2.7-10pF and parallel inductor 3.3nH at output port.