



SAW 18.18 MHz Filter

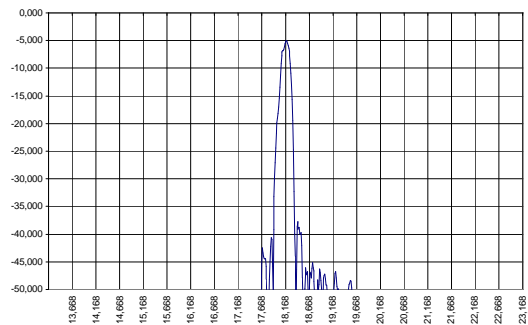
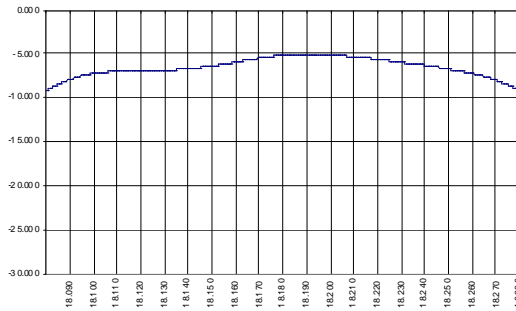
Bandwidth 0.15 MHz

Part Number A188-18.18M1

Complies with Directive 2002/95/EC (RoHS)

PRELIMINARY DATA

Typical performance



Specifications

Parameter	Unit	Min	Typ	Max
Central frequency	MHz	18.165	18.18	18.195
Inserted loss (matched)	dB	5	5.5	6
Bandwidth @-3dB	MHz	0.15	0.16	0.17
Bandwidth @-40dB		-	0.87	0.9
Ultimate rejection	dB		-50	
Substrate			128LNO	
Temperature range	°C	-40		85

Notes:

1. The design, manufacturing process, and specifications of this filter are subject to change.
2. Specification valid for measurements in AEC test fixture

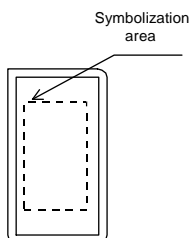
Case

Matching

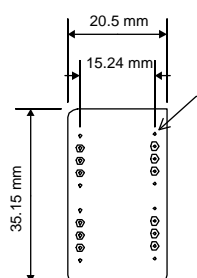


SIEMENS DIP24
Mass approx.10.4g

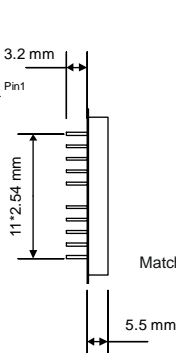
Top view



Bottom view



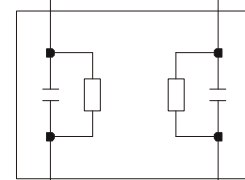
Side view



Pin diameter 0.5 mm

3 (Signal IN)

15 (Signal OUT)



1,2,4-14,16-24 (Gnd)
 $Z_{in}=Z_{out}=50 \text{ Ohm}$

Matching: series capacitor (90-120) and parallel inductor 750nH at input/output port