



# SAW 69.25 MHz Filter

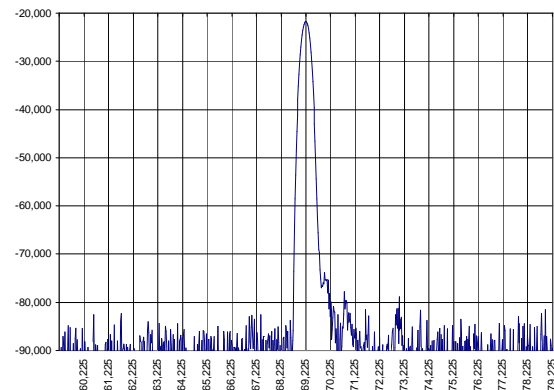
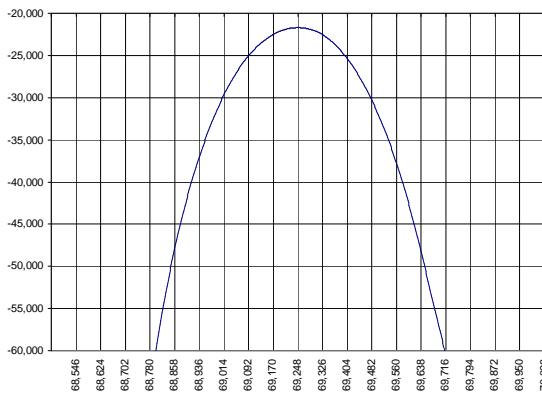
Bandwidth 280 KHz

Part Number A067-69.25M2

Complies with Directive 2002/95/EC (RoHS)

PRELIMINARY DATA

## Typical performance



## Specifications

Parameter	Unit	Min	Typ	Max
Central frequency	MHz	69.240	69.250	69.260
Inserted loss (unmatched)	dB	21.5	22	22.5
Bandwidth @-3dB	MHz	0.27	0.28	0.3
Bandwidth @-40dB	MHz	-	0.93	0.95
Ultimate rejection	dB		55	
Substrate			36 YX quartz	
Temperature range	<sup>o</sup> C	-40		85

### Notes:

1. The design, manufacturing process, and specifications of this filter are subject to change.
2. Specification valid for measurements in AEC test fixture

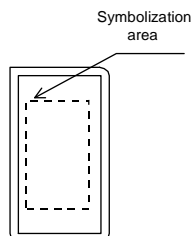
## Case

## Matching

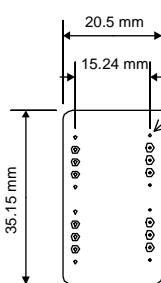


SIEMENS DIP24  
Mass approx.10.4g

Top view

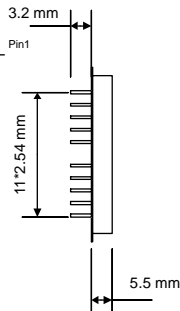


Bottom view



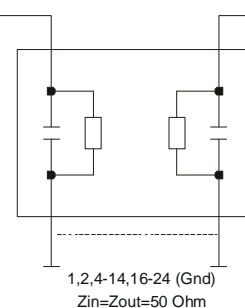
Pin diameter 0.5 mm

Side view



3 (Signal IN)

15 (Signal OUT)



1,2,4-14,16-24 (Gnd)  
Z<sub>in</sub>=Z<sub>out</sub>=50 Ohm